

ALINA 170

DIRECT | SURFACE

ALINA 170



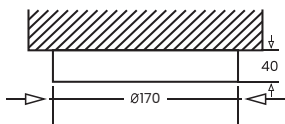
ALINA surface mounted diffused downlighter with compact circular design is made up of die cast aluminium housing and with premium powder coated finish.

Powered by high quality LED's with a binning tolerance of ≤ 3 SDCM and CRI ≥ 90 . The luminaire maintains atleast 70% of its luminous flux after 50,000 operating hours, guaranteeing long term reliability. High efficiency PMMA diffuser gives uniform illumination

Alina Surface downlighter is crafted for direct light distribution making it ideal for residential, commercial & professional applications.

SINGLE LINE DIAGRAM SURFACE

ALINA 170



ALINA 170



QUICK INFO

MOUNTING TYPE

SURFACE

MATERIAL COLOUR

CUSTOMIZE RAL AVAILBLE

PROTECTION MODE

IP40

DRIVER DETAILS

ON/OFF/, DALI-2 DT6 / DALI-2 DT8/ DALI +

POWER FACTOR (PF) -0.95

THD- <10%

UGR - <19

LED

CCT- 3000K/ 4000K/ 5700K/ TUNABLE WHITE 2700K-6500K

CRI- ≥ 90

LIFE SPAN - L70@50000H

MACADAM - ≤ 3 SDCM

BEAM ANGLE

110°

OPTICS

PMMA DIFFUSER

EFFICACY

3000K- 87.5

4000K- 98.9

5700K- 112.1

TUNABLE WHITE 2700K-6500K- 98.9

ELECTRICAL

WATTAGE - 18W

INPUT VOLTAGE- 220-240 VAC

PHYSICAL DIMENSIONS

DIA- 170MM

HEIGHT- 40MM